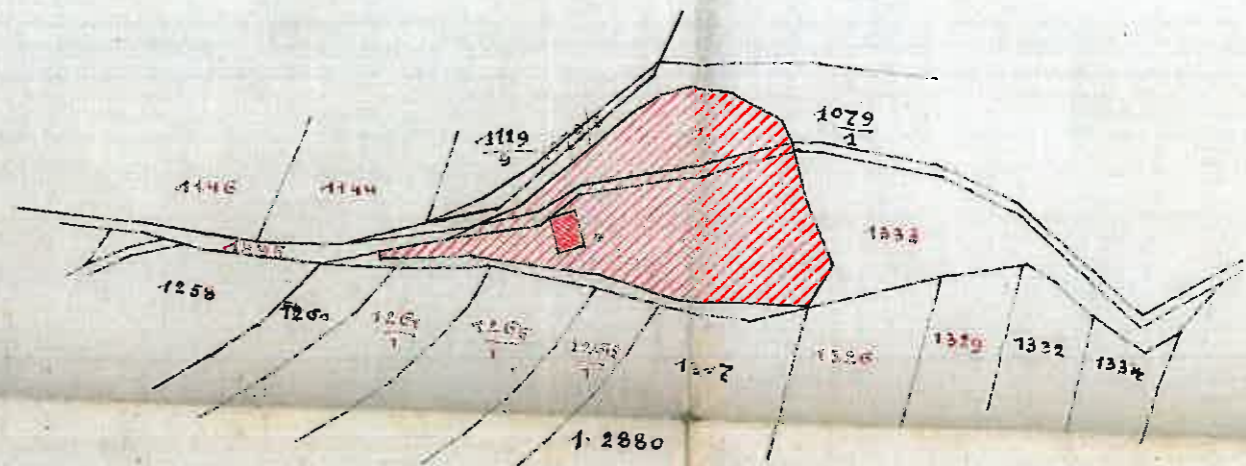
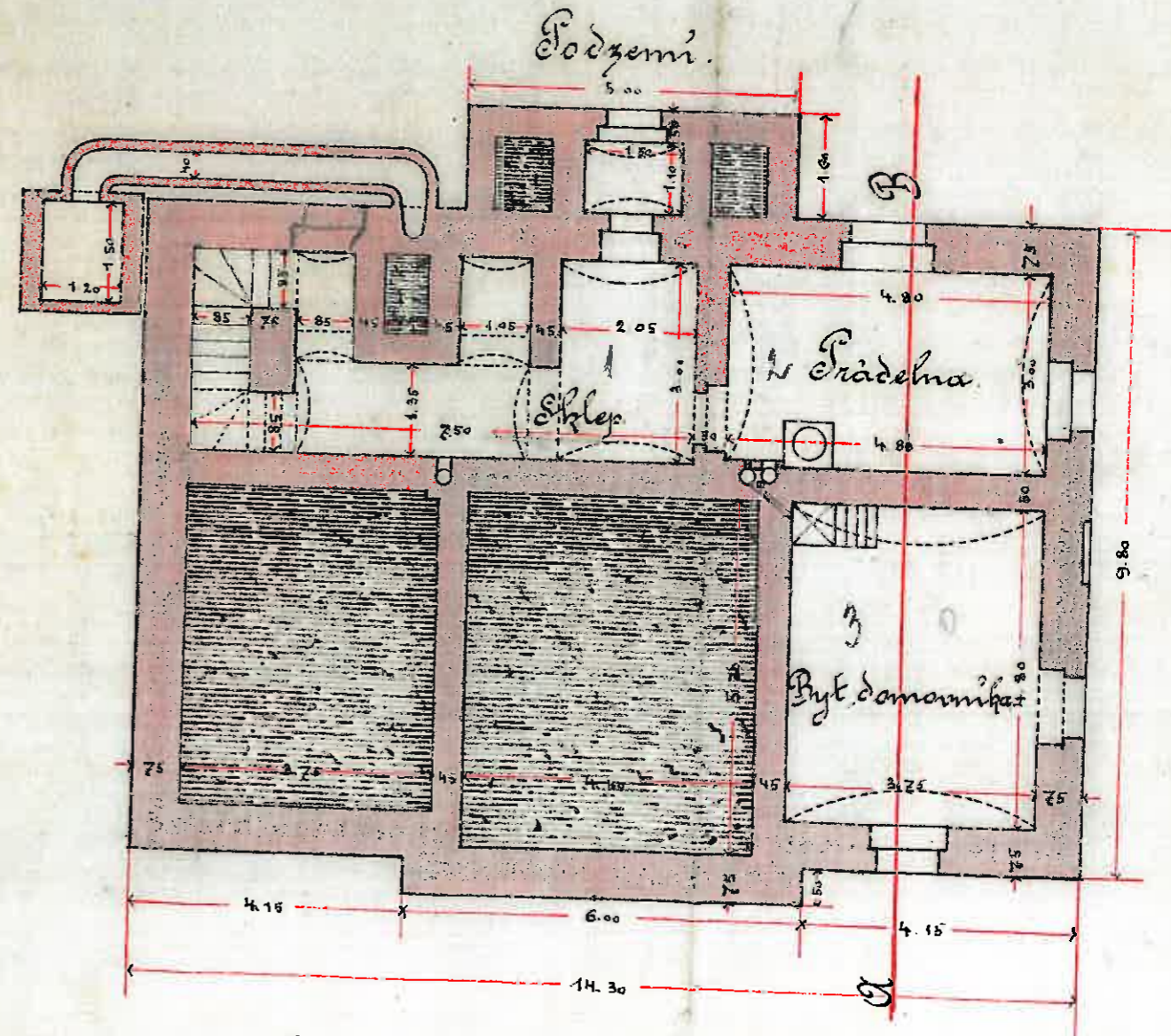
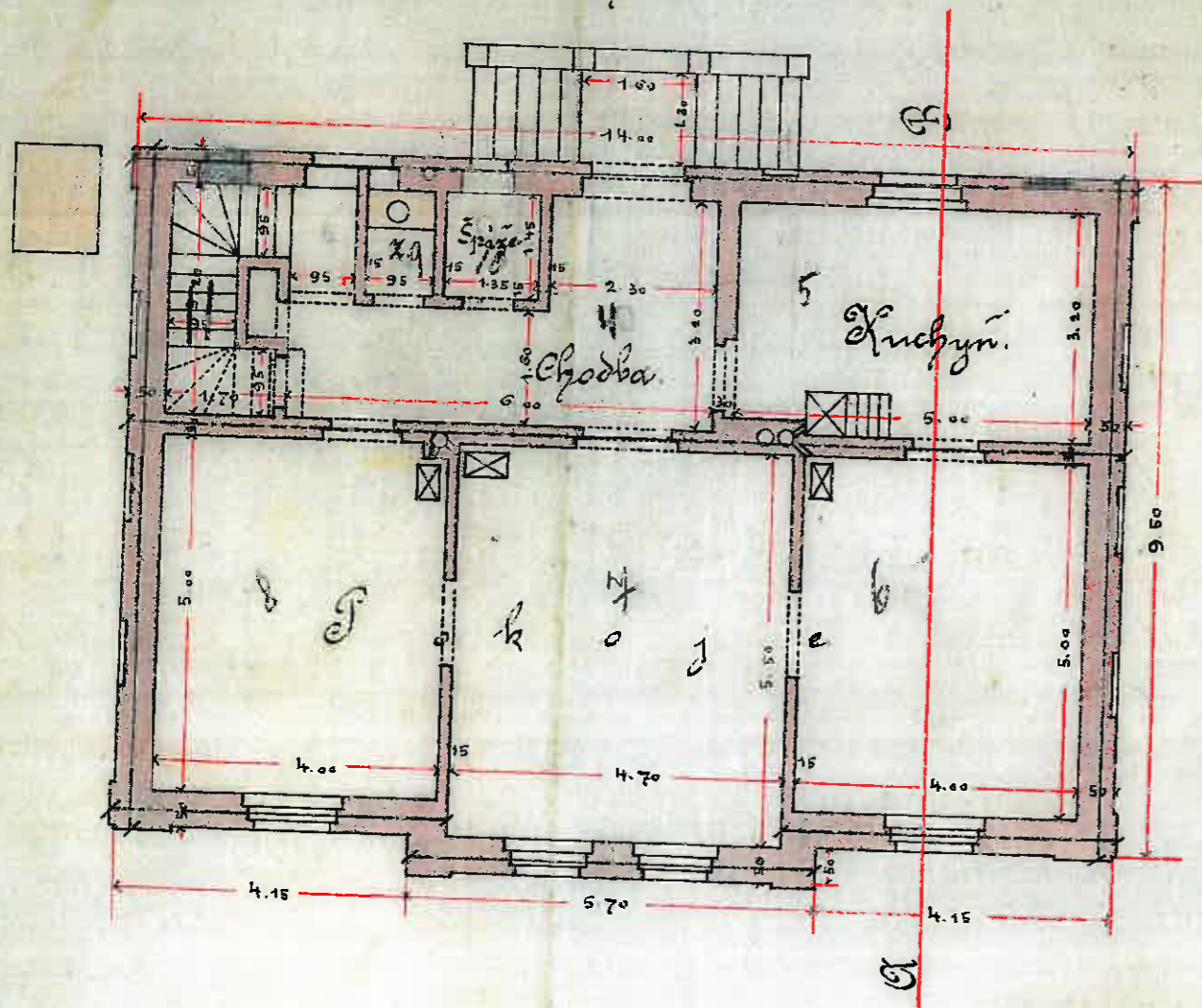


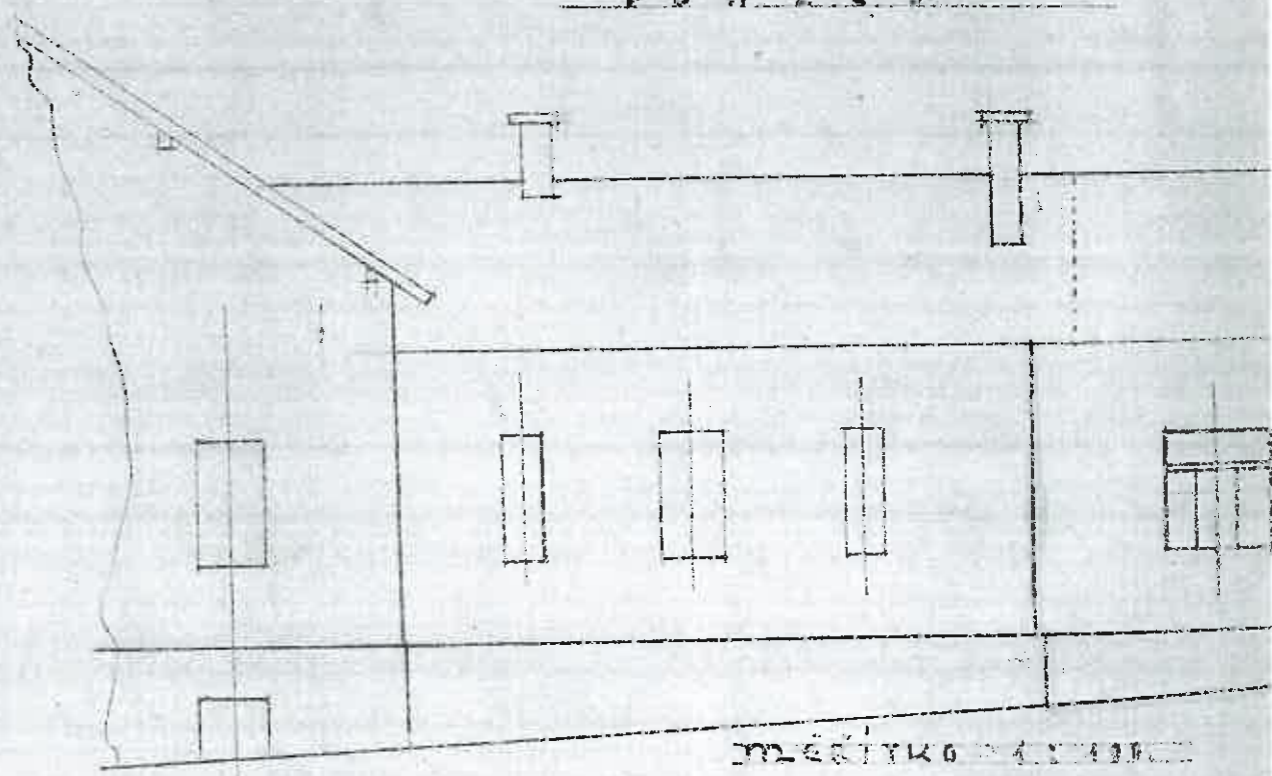
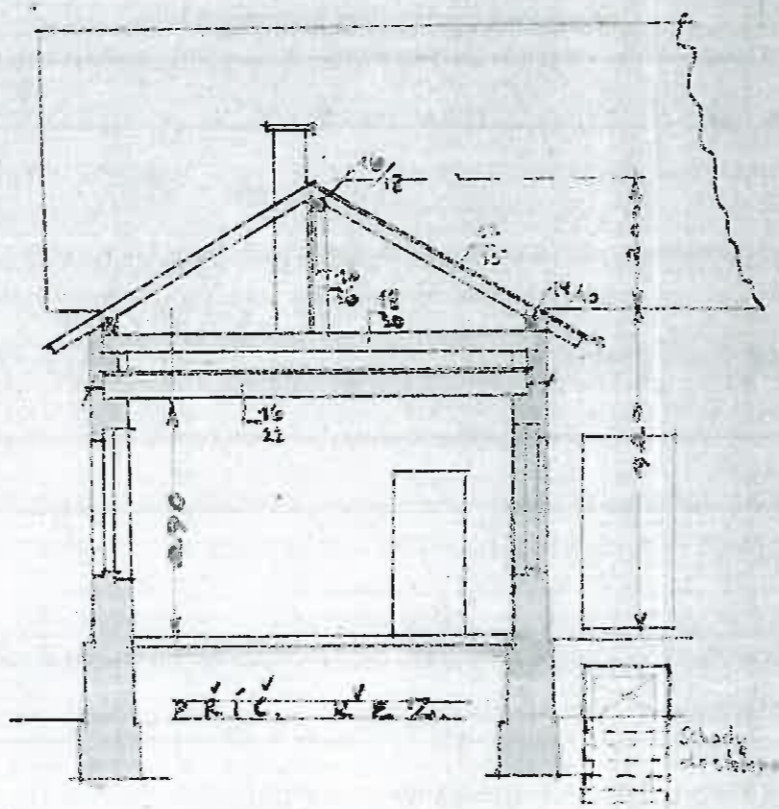
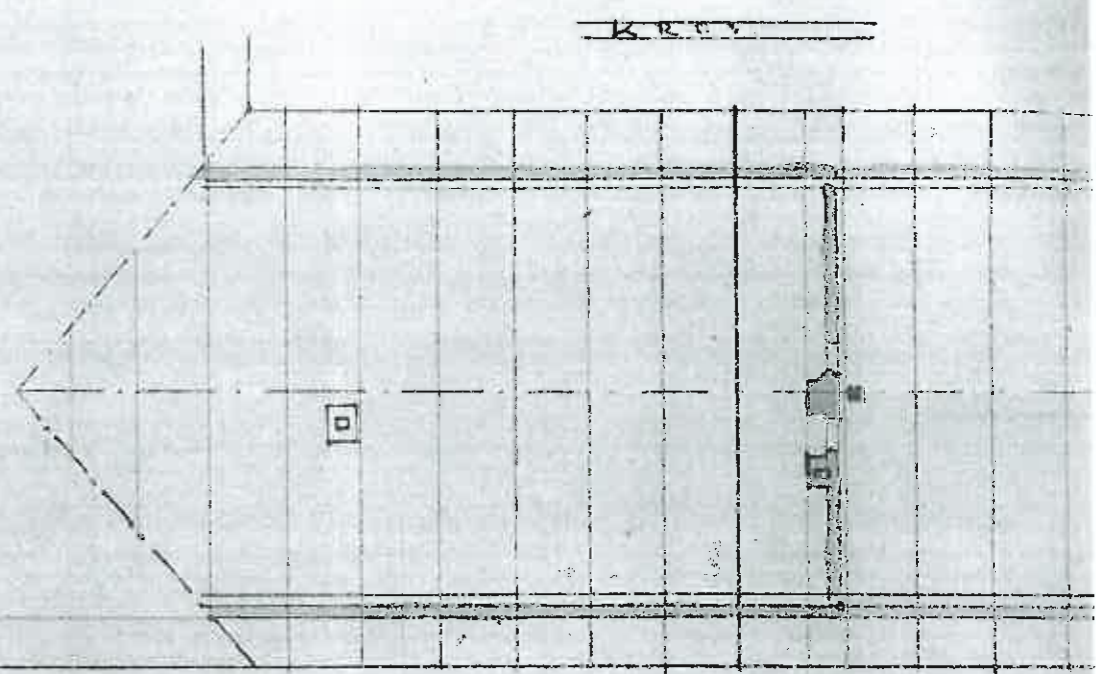
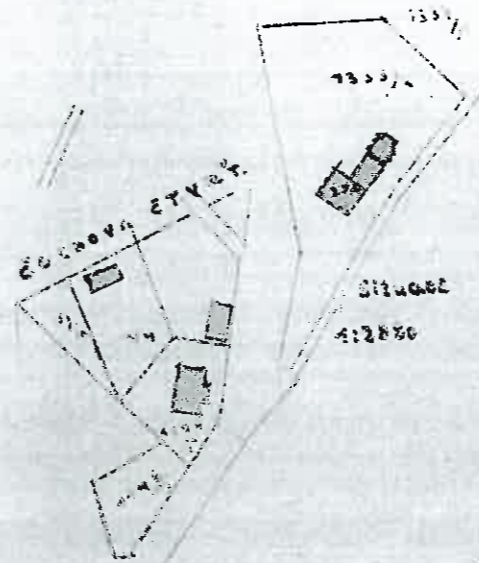
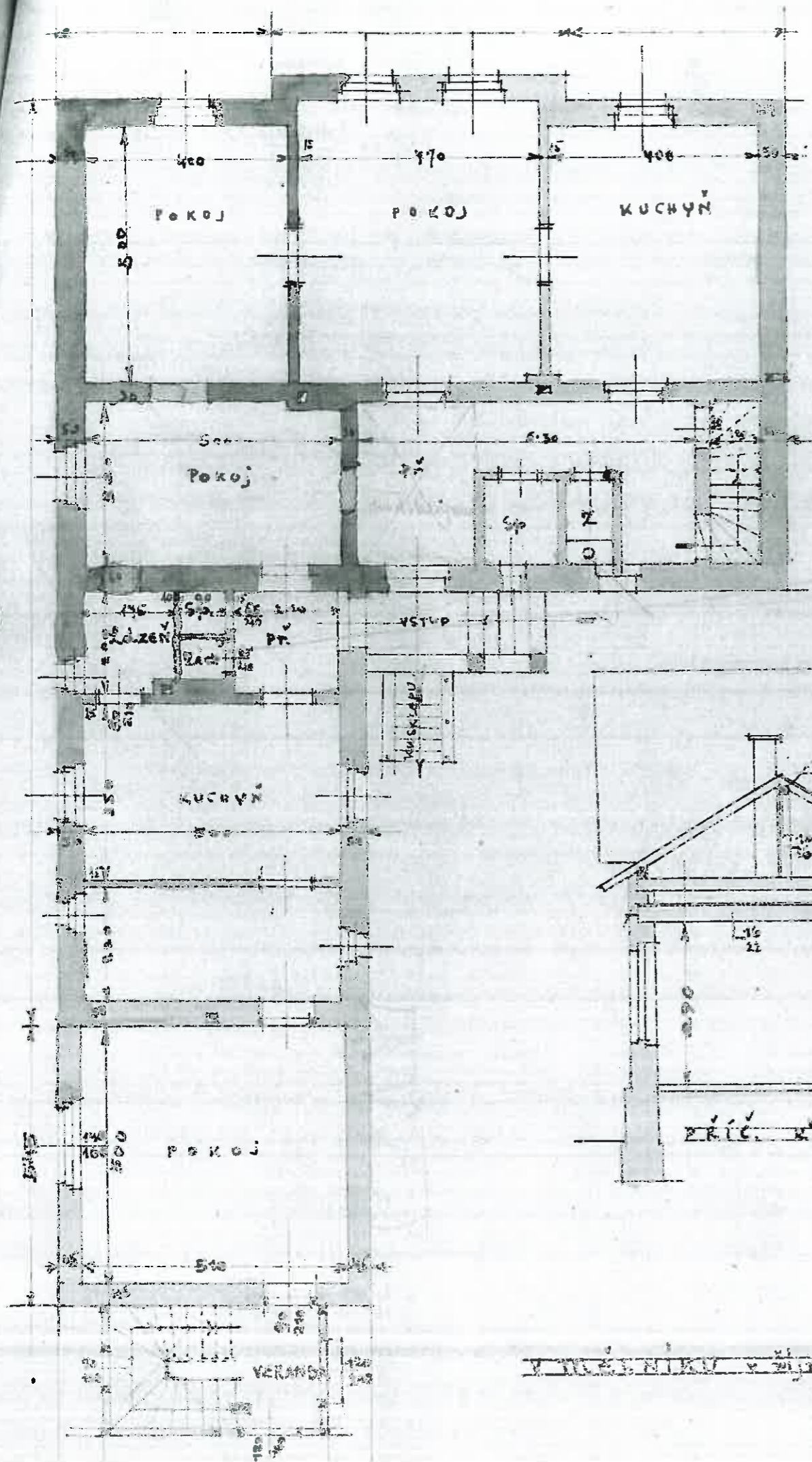
Prizemi.



L.P. 1897



29mE. 0m ~

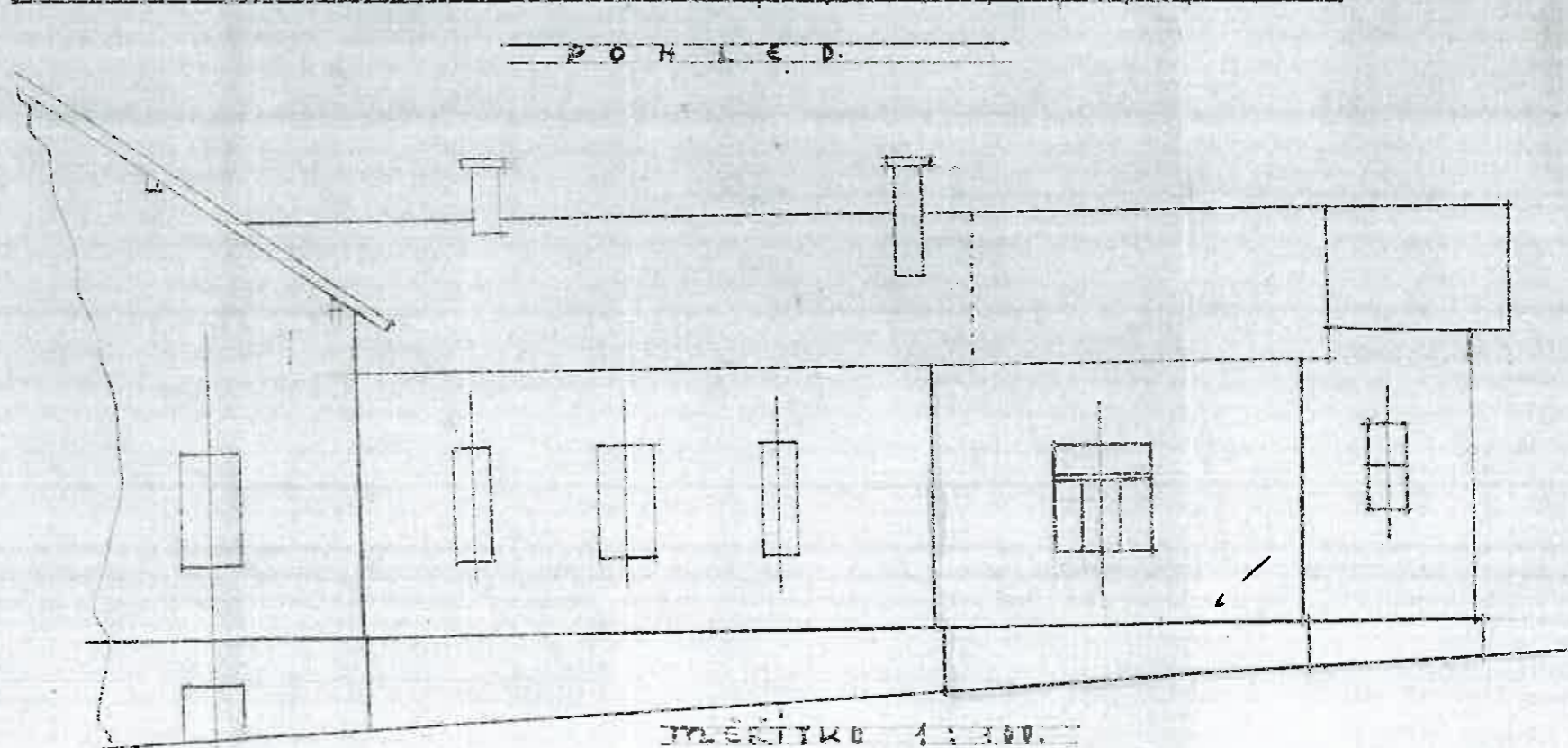
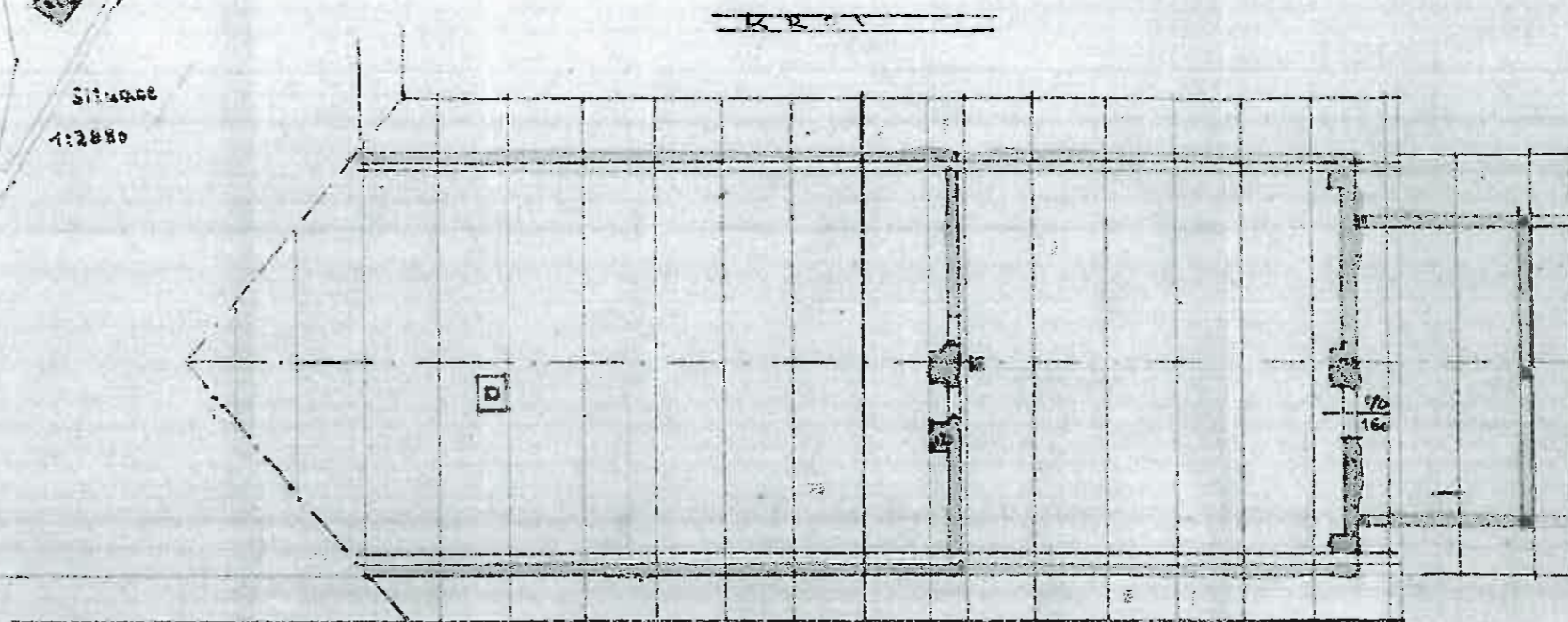
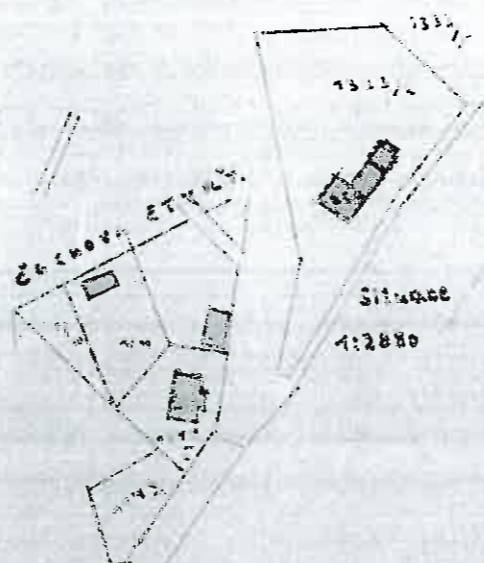
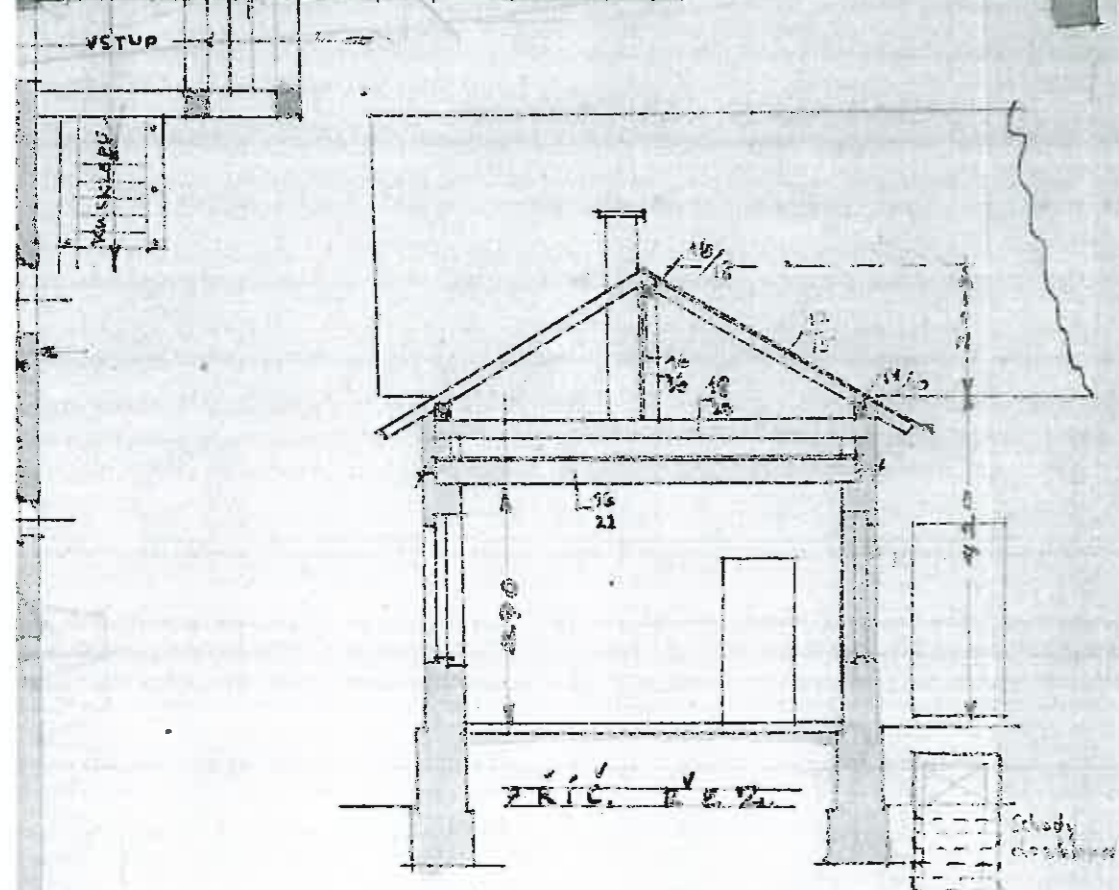
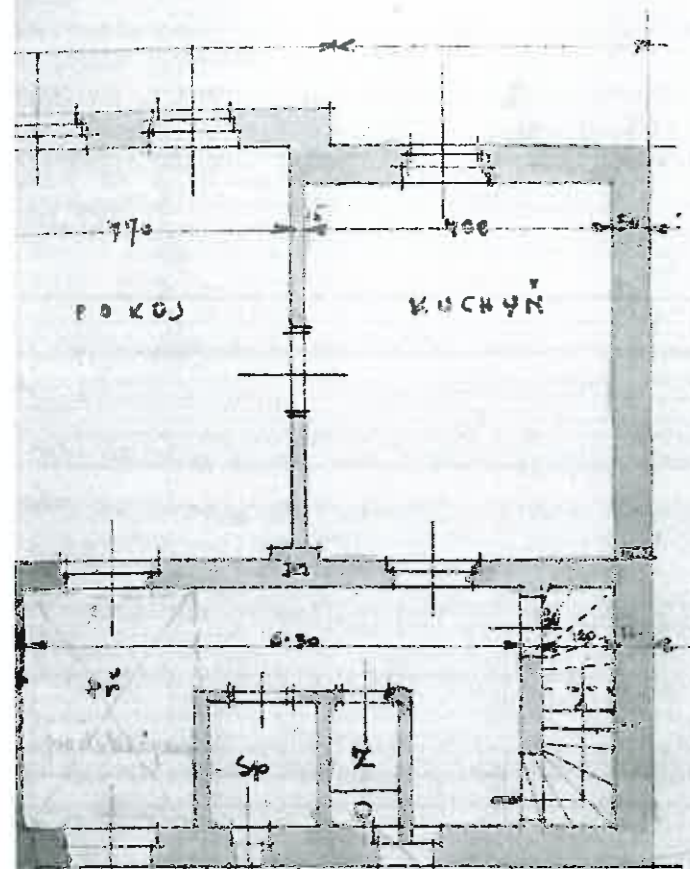


V MĚSTNÍKU V MĚSTĚ MEDIANE

Čestná společnost pro přímou výrobu
 CUKROVAR A RAFINERIE CUKRU
 v Medianě

[Handwritten signatures]





Česká společnost pro průmysl cukrů
 CUKROVAR A RAFINERIE CUKRŮ
 v Moštanech

Handwritten signatures and initials.



Architekt
 JOSEF MIKULAŠ,
 inženýr
 MĚLNÍK
Handwritten signature: Mikulaš

V MOŠTANECH v říjnu 1927